

## Indiana Dunes Ntl. Lakeshore Prime Land For Sale



### Porter, Indiana

- **Hard corner location at entry to Splash Down Dunes Water Park**
- **Located at the intersection of US 20 & Waverly—just west of SR 49**
- **Last interchange before the Indiana Dunes National Lakeshore**
- **Traffic on US 20 is 19,100 vpd and on SR 49 is 10,750 vpd**
- **Multi parcel offering totaling 3 acres**
- **Asking price of \$1.6M**

**For Information:**

<p><b>Bill Baker</b>  <a href="mailto:bbaker@brantco.com">bbaker@brantco.com</a>                  219-712-1387</p>	<p><b>Jeff Brant</b>  <a href="mailto:jbrant@brantco.com">jbrant@brantco.com</a>                  219-865-9900</p>
--	--

**The Brant Companies**  
 7651 Harvest Drive  
 Schererville, IN 46375

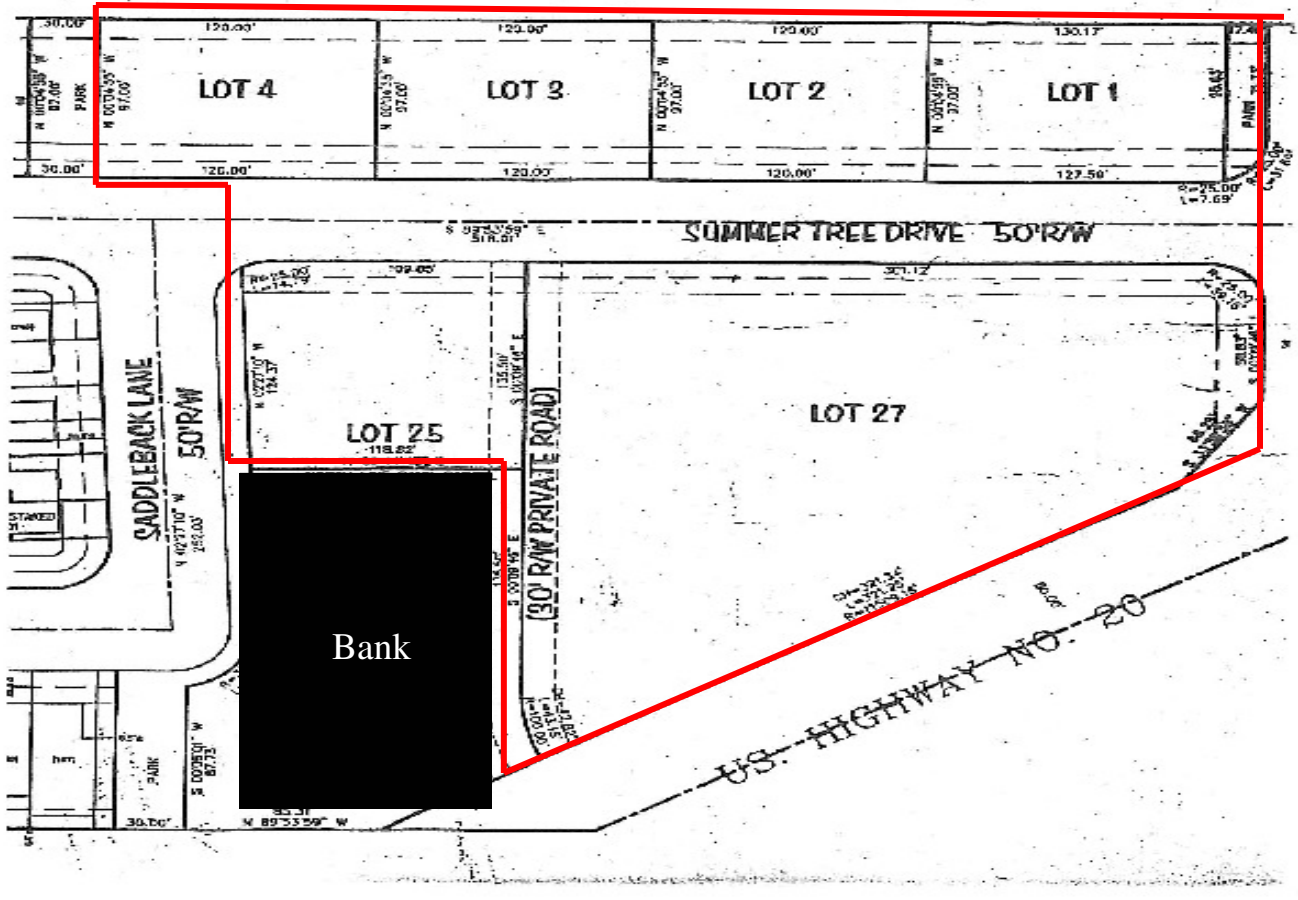
### Demographics

<u>Average HH Income</u>	<u>Estimated Population</u>
1 mile \$101,033	1 mile 730
3 mile \$79,355	3 mile 11,704
5 mile \$80,421	5 mile 16,996

[www.brantco.com](http://www.brantco.com)

This statement, with the information it contains, is given with the understanding that all negotiations relating to the purchase, renting or leasing of the property described above shall be conducted through this office. The above information, while not guaranteed, has been secured from sources we believe to be reliable.

## Porter, Indiana Prime Land For Sale



### Demographics

#### Average HH Income

1 mile \$101,033  
3 mile \$79,355  
5 mile \$80,421

#### Estimated Population

1 mile 730  
3 mile 11,704  
5 mile 16,996

[www.brantco.com](http://www.brantco.com)

#### For Leasing Info:

Bill Baker  
[bbaker@brantco.com](mailto:bbaker@brantco.com)  
219-712-1387  
Jeff Brant  
[jbrant@brantco.com](mailto:jbrant@brantco.com)  
219-865-9900  
The Brant Companies  
7651 Harvest Drive  
Scherville, IN 46375